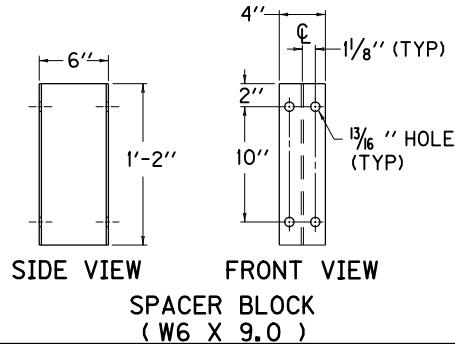
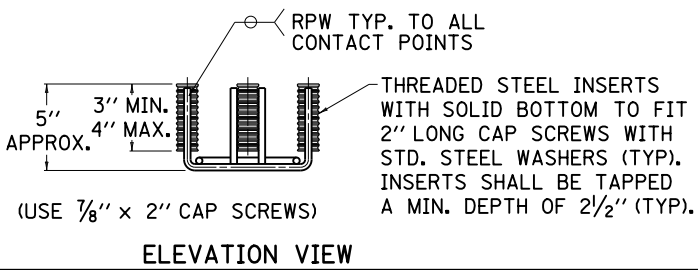
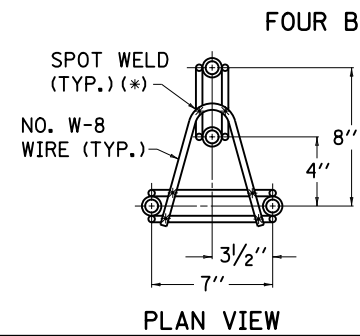
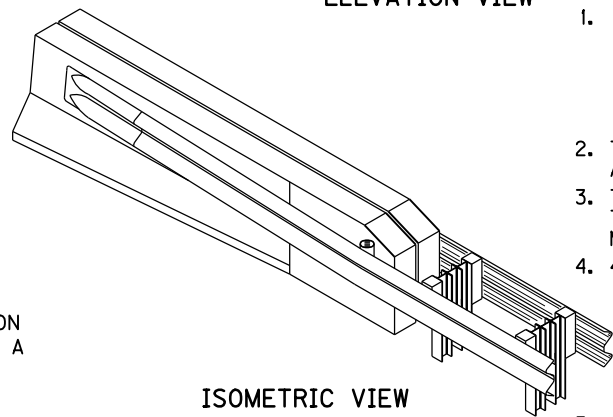
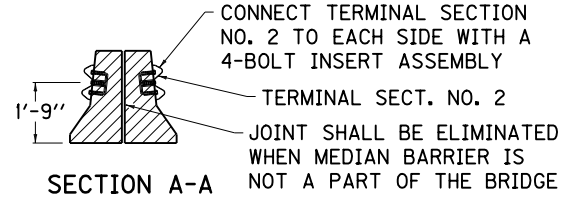
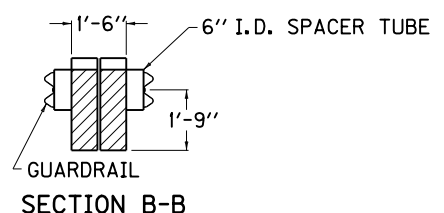


- ① OFFSET BLOCK
 ② GUARDRAIL POST
 ③ STEEL SPACER BLOCKS
 ④ 6" I.D. x 10" LONG STEEL SPACER TUBE, SCH. 40 GALV. PIPE (ATTACH TO GUARDRAIL ONLY).

TERMINAL SECTION NO. 2, FOR RECTANGULAR PLATE-WASHER REQUIREMENTS AT SPLICE SEE CUR. STD. DWG. [RBR-O10](#)

- NOTES**
- GUARDRAIL CONNECTOR TO CONCRETE MEDIAN BARRIER END SHALL BE PAID FOR AT THE CONTRACT UNIT PRICE EACH AND INCLUDES TERMINAL SECTION NO. 2, ADDITIONAL POSTS, ADDITIONAL OFFSET BLOCKS, ADDITIONAL RAIL ELEMENTS, HARDWARE, ETC., AND OTHER INCIDENTALS AS SHOWN BETWEEN POINTS A and B NECESSARY TO COMPLETE THE INSTALLATION AS DETAILED.
 - THE STEEL "W" BEAM GUARDRAIL (DOUBLE FACE), IS A SEPARATE BID ITEM AND SHALL BEGIN PAYMENT AT POINT A.
 - THE 4-BOLT INSERT ASSEMBLY INSTALLATION SHALL BE INCIDENTAL TO THE COST OF THE BRIDGE SUPERSTRUCTURE CONCRETE OR CONCRETE MEDIAN BARRIER END AS APPLICABLE.
 - 4-BOLT ASSEMBLIES:
 - (a) THE 7/8" x 2" CAP SCREWS WITH STANDARD STEEL WASHERS SHALL BE GALVANIZED AND CONFORM TO ASTM A-325.
 - (b) NO. W-8 GAGE WIRE, COLD DRAWN CONFORMING TO ASTM A-82.
 - (c) STEEL INSERTS SHALL CONFORM TO ASTM A-108 GRADES C1008 AND C1010 OR B1113.
 - SEE CUR. STD. DWGS. IN THE [RBI](#), [RBE](#), AND [RBR-SERIES](#) AS APPLICABLE.
 - BACK UP PLATES ARE NOT REQUIRED WITHIN THE 2 PLY GUARDRAIL SECTION.
 - SEE BRIDGE PLANS FOR CONSTRUCTION DETAILS WHEN APPLICABLE.



KENTUCKY	
DEPARTMENT OF HIGHWAYS	
GUARDRAIL CONNECTOR TO CONCRETE MEDIAN BARRIER END	
STANDARD DRAWING NO. RBC-100-03	
SUBMITTED BY <i>John B. Sackett</i> DIRECTOR DIVISION OF DESIGN	12-1-99 DATE
APPROVED BY <i>J. M. Powell</i> STATE HIGHWAY ENGINEER	12-1-99 DATE